



**Test Report**

No.T32420250091TC

Date: Jan 15, 2024

Page 1 of 4

POLYKOTE INK & PAINT (SHENZHEN) LTD.  
NO. 118, HUANG PU ROAD, SHAJING SUBDISTRICT, BAOAN, SHENZHEN, CHINA  
(ZIP CODE:518125)

The following samples were submitted and identified by/on behalf of the client as:  
PLEASE SEE ATTACHMENT

**Attachment:**

FLEXOGRAPHIC & ROTOGRAVURE INK NO.:	INK COLOR:
HR / AA / 356 / 358 / 56 / 58 / M	MAGENTA

Case No. : CA324202503389  
Sample Receiving Date : JAN 03, 2024  
Testing Period : JAN 03, 2024 – JAN 15, 2024

Test Requested : Please refer to the result summary.

Test Method & Results : Please refer to next page(s).

Result Summary :

Test Requested	Conclusion
Halogen Content (Chlorine, Fluorine, Iodine and Bromine)	--

\*\*\*\*\* FOR FURTHER DETAILS, PLEASE REFER TO THE FOLLOWING PAGE(S) \*\*\*\*\*

Signed for and on behalf of  
SGS Hong Kong Ltd.



To Man Wah, Po  
Technical Manager

This document is issued by the Company subject to its General Conditions of Service printed overleaf, available on request or accessible at <http://www.sgs.com/en/Terms-and-Conditions.aspx> and, for electronic format documents, subject to Terms and Conditions for Electronic Documents at <http://www.sgs.com/en/Terms-and-Conditions/Terms-e-Document.aspx>. Attention is drawn to the limitation of liability, indemnification and jurisdiction issues defined therein. Any holder of this document is advised that information contained hereon reflects the Company's findings at the time of its intervention only and within the limits of Client's instructions, if any. The Company's sole responsibility is to its Client and this document does not exonerate parties to a transaction from exercising all their rights and obligations under the transaction documents. This document cannot be reproduced except in full, without prior written approval of the Company. Any unauthorized alteration, forgery or falsification of the content or appearance of this document is unlawful and offenders may be prosecuted to the fullest extent of the law.

Unless otherwise stated the results shown in this test report refer only to the sample(s) tested and such sample(s) are retained for 30 days only.



**Test Results:**

**Halogen Content (Chlorine, Fluorine, Iodine and Bromine)**

Method : With reference to BS EN 14582:2016. Analysis was performed by IC method.

Test Item	Result (mg/kg)	Reporting Limit (mg/kg)	Reference Limit (mg/kg)
	1		
Chlorine (Cl)	ND	20	900
Bromine (Br)	ND	20	900
Fluorine (F)	ND	20	--
Iodine (I)	ND	20	--
Sum of halogens content	ND	--	1500

Sample Description :

1. Magenta paint (HR / AA/ 356 / 358 / 56 /58 / M)

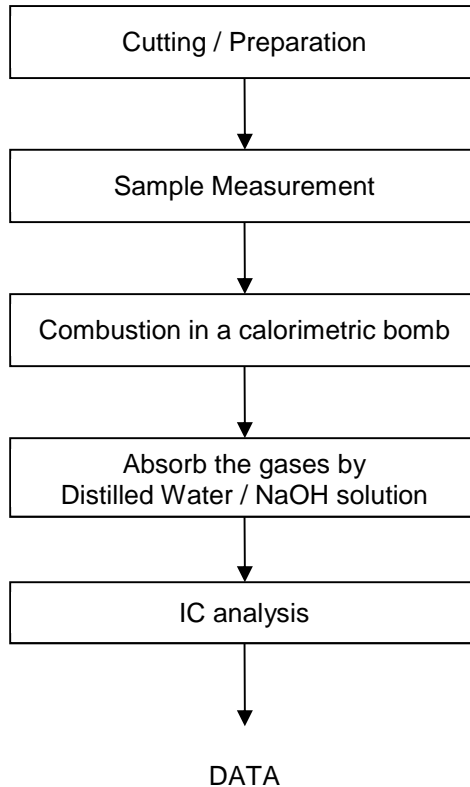
- Note:
1. mg/kg = milligram per kilogram
  2. ND = Not Detected

Remark : The reference limit is quoted from IEC 61249-21 clause 3.1.

This document is issued by the Company subject to its General Conditions of Service printed overleaf, available on request or accessible at <http://www.sgs.com/en/Terms-and-Conditions.aspx> and, for electronic format documents, subject to Terms and Conditions for Electronic Documents at <http://www.sgs.com/en/Terms-and-Conditions/Terms-e-Documents.aspx>. Attention is drawn to the limitation of liability, indemnification and jurisdiction issues defined therein. Any holder of this document is advised that information contained hereon reflects the Company's findings at the time of its intervention only and within the limits of Client's instructions, if any. The Company's sole responsibility is to its Client and this document does not exonerate parties to a transaction from exercising all their rights and obligations under the transaction documents. This document cannot be reproduced except in full, without prior written approval of the Company. Any unauthorized alteration, forgery or falsification of the content or appearance of this document is unlawful and offenders may be prosecuted to the fullest extent of the law.

Unless otherwise stated the results shown in this test report refer only to the sample(s) tested and such sample(s) are retained for 30 days only.

### Flowchart:



This document is issued by the Company subject to its General Conditions of Service printed overleaf, available on request or accessible at <http://www.sgs.com/en/Terms-and-Conditions.aspx> and, for electronic format documents, subject to Terms and Conditions for Electronic Documents at <http://www.sgs.com/en/Terms-and-Conditions/Terms-e-Document.aspx>. Attention is drawn to the limitation of liability, indemnification and jurisdiction issues defined therein. Any holder of this document is advised that information contained hereon reflects the Company's findings at the time of its intervention only and within the limits of Client's instructions, if any. The Company's sole responsibility is to its Client and this document does not exonerate parties to a transaction from exercising all their rights and obligations under the transaction documents. This document cannot be reproduced except in full, without prior written approval of the Company. Any unauthorized alteration, forgery or falsification of the content or appearance of this document is unlawful and offenders may be prosecuted to the fullest extent of the law.

Unless otherwise stated the results shown in this test report refer only to the sample(s) tested and such sample(s) are retained for 30 days only.

**Remark:**

When statement of conformity is made, unless inherent in the requested specification, the decision rule would be based on the non-binary statement with guard band (is equal to the expanded measurement uncertainty with a 95% coverage probability,  $w = U_{95}$ ) in ILAC-G8:09/2019 Clause 4.2.3.

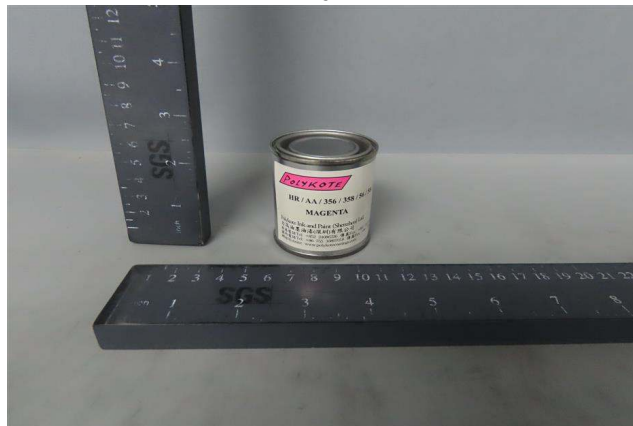
“Pass - the measured value is within (or below / above) the acceptance limit, where the acceptance limit is below / above to the guard band.” or “Pass - The measured values were observed in tolerance at the points tested. The specific false accept risk is up to 2.5%.”.

“Fail - the measured value is out of (or below / above) the tolerance limit added / subtracted to the guard band.” or “Fail - One or more measured values were observed out of tolerance at the points tested”. The specific false reject risk is up to 2.5%.

“Inconclusive – It is not possible to state the conformity. Either one or more measured values were observed in the portion of the expanded measurement uncertainty intervals at the points tested where the specific risk is up to 50%.”

**Sample Photo:**

Pic.1



SGS authenticate the photo on original report only

\*\*\* End of Report \*\*\*

This document is issued by the Company subject to its General Conditions of Service printed overleaf, available on request or accessible at <http://www.sgs.com/en/Terms-and-Conditions.aspx> and, for electronic format documents, subject to Terms and Conditions for Electronic Documents at <http://www.sgs.com/en/Terms-and-Conditions/Terms-e-Document.aspx>. Attention is drawn to the limitation of liability, indemnification and jurisdiction issues defined therein. Any holder of this document is advised that information contained hereon reflects the Company's findings at the time of its intervention only and within the limits of Client's instructions, if any. The Company's sole responsibility is to its Client and this document does not exonerate parties to a transaction from exercising all their rights and obligations under the transaction documents. This document cannot be reproduced except in full, without prior written approval of the Company. Any unauthorized alteration, forgery or falsification of the content or appearance of this document is unlawful and offenders may be prosecuted to the fullest extent of the law.

Unless otherwise stated the results shown in this test report refer only to the sample(s) tested and such sample(s) are retained for 30 days only.